



**1810 STYLING**

The philosophy of The 1810 Company is to supply innovative and contemporary European design to those who appreciate superior quality, styling and value.

The 1810 range is segmented into three sink styles; Zen, Etro and Quad.



Try our new Zendo **Grande Deep**, the largest and most practical undermount in the UK market.

With monster dimensions (940 x 520mm) it eats woks, casserole dishes and big pans with ease!

**ZEN**

The Zen range is a contemporary linear design with striking square and rectangular bowls. It is handmade in 1.2mm gauge stainless steel and finished to an exacting specification.

The range offers a selection of undermount and inset models. (See pages 30-31)

*Please note that all 1810 undermount sinks can also be flush mounted or inset.*

- Satin finish
- 1.2mm stainless
- Insusound
- Basket strainer waste and plumbing kit
- Fixing kit
- Cut out template
- Individually boxed



**ETRO**

The Etro range has a classic, curved design and is hand made to the highest standard in 1.2mm gauge stainless steel.

The range offers a versatile selection in undermount applications. (See pages 30-31)

*Please note that all 1810 undermount sinks can also be flush mounted or inset.*

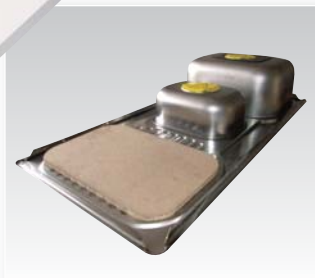
- Satin finish
- 1.2mm stainless
- Insusound
- Basket strainer waste and plumbing kit
- Fixing kit
- Cut out template
- Individually boxed



**QUAD**

The Quad range is a modern design with curved inset bowls and drainer. Available in polished and satin finished models, Quad is a two part construction with welded bowls for extra depth. Its 1mm stainless steel and reinforced drainer sets it apart for robustness and performance.

- Polished and Satin finishes
- 1mm stainless
- Reinforced drainer
- Basket strainer waste and plumbing kit
- Fixing kit
- Individually boxed



A4 1810 brochure available on request.



CONTEMPORARY SINKS, TAPS AND ACCESSORIES



**SPECIFICATION DETAILS**



Zenduo stainless steel undermount sink in Encore Glacier worksurface

**1810 SINKS**

**QUALITY**

1810 Sinks feature the highest degree of technology, quality and design and as a result, a 75 year warranty against manufacturing defects comes with all models.



**INSUSOUND**

1810 sinks are treated on the underside with a protective powder coating called "Insusound". This will help retain the heat of the water in the bowl and dramatically reduce noise when fitting a waste disposal unit.



(Available on the Zen and Etro ranges only)

**PLUMBING KIT**

All sinks are supplied with a full plumbing kit and if you order two individual bowls we will supply a jointing pipe free of charge.

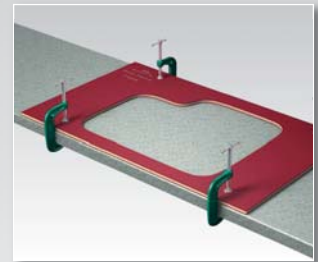
**HANDING**

When choosing 1810 sinks please refer **BBR** and **BBL**, which is an easy reference when ordering...

**BBR** - Big bowl right - **BBL** - Big bowl left

**1810 UNDERMOUNTS ARE COMPATIBLE WITH ALL SOLID SURFACE RANGES**

**BB Encore:** Jigs are available for Zenduo 340/180U and Etroduo 589/450U undermount models for on-site installation.



**Mistral:** Jigs are available for all 1810 undermount models for on-site installation. Please go to [www.plasman.co.uk](http://www.plasman.co.uk) for details.

**Artis Silica:** Pre-installed service on any 1810 undermount. Alternatively, jigs are available for Zenduo 340/180U and Etroduo 589/450U models for on-site installation.

**PACKAGING**

1810 sink models are individually boxed for optimum protection and presentation and contain all necessary installation accessories.

**1810 TAPS**

**QUALITY**

1810 Taps are manufactured to the highest German DIN quality standards. Milled and drilled from solid brass, all models offer high performance standards and total reliability, avoiding the leakage problems associated with sand cast products.

1810 Taps carry a 2 year warranty against manufacturing defects.



All models are supplied with a "Neop pearl Aerator" which provides a non splash, even, consistent creamy flow.



**PACKAGING**

1810 Tap models are individually boxed for optimum protection and presentation and contain all necessary installation accessories.





REFERENCE GUIDE

**Zenuno 180U**  
ZU/18/U/S/017 - 89



Minimum cabinet size 300mm

**Zenuno 340U**  
ZU/34/U/S/018 - 112



Minimum cabinet size 400mm

**Zenuno 340U Deep**  
ZU/34/U/D/S/70 - 140



Minimum cabinet size 400mm

**Zenuno 400U**  
ZU/40/U/S/019 - 125



Minimum cabinet size 450mm

**Zenuno 400U Deep**  
ZU/40/U/D/S/71 - 156



Minimum cabinet size 450mm

**Zenuno 450U**  
ZU/45/U/S/020 - 128



Minimum cabinet size 500mm

**Zenuno 500U**  
ZU/50/U/S/021 - 138



Minimum cabinet size 600mm

**Zenuno 700U**  
ZU/70/U/S/023 - 220



Minimum cabinet size 800mm

**Zenduo 340/180U**  
ZD/3418/U/S/022 - 220



Minimum cabinet size 600mm

**Zenduo 400/400U**  
ZD/4040/U/S/025 - 265



Minimum cabinet size 900mm

**Zenduo 356/343U BBL**  
ZD/3534/U/S/BBL/028 - 350



Minimum cabinet size 800mm

**Zenuno 51-F**  
ZU/51F/S/BBR/026 - 300



Minimum cabinet size 500mm

**Zenuno 51-F**  
ZU/51F/S/BBL/039 - 300



Minimum cabinet size 500mm

**Zenduo 61-F**  
ZD/61F/S/BBR/027 - 355



Minimum cabinet size 600mm

**Zenduo 61-F**  
ZD/61F/S/BBL/038 - 355



Minimum cabinet size 600mm

**Zenduo Grande Deep 700/180U**  
ZD/7018/U/D/S/072 - 370



Minimum cabinet size 1000mm

**Etrouno 170U**  
EU/17/U/MS/034 - 44



Minimum cabinet size 300mm

**Etrouno 340U**  
EU/34/U/MS/035 - 59



Minimum cabinet size 400mm

**Etrouno 400U**  
EU/40/U/MS/036 - 63



Minimum cabinet size 450mm

**Etrouno 550U**  
EU/55/U/MS/037 - 72



Minimum cabinet size 600mm



CONTEMPORARY SINKS, TAPS AND ACCESSORIES



**Etroduo 589/450U REV**  
ED/5845/U/MS/REV/031 - 117



Minimum cabinet size 600mm

**Etroduo 589/450U BBL**  
ED/5845/U/MS/BBL/032 - 117



Minimum cabinet size 600mm

**Etroduo 589/450U BBR**  
ED/5845/U/MS/BBR/033 - 117



Minimum cabinet size 600mm

**Quaduno 780 I**  
QU/78/I/MS/REV/040 - 89



Minimum cabinet size 450mm

**Quadduo 1000 I**  
QD/100/I/MS/REV/041 - 99



Minimum cabinet size 600mm

**Quaduno 820 IS**  
QU/82/I/S/REV/050 - 89



Minimum cabinet size 450mm

**Quadduo 1020 IS**  
QD/102/I/S/REV/051 - 99



Minimum cabinet size 600mm

**Courbe Curved Spout**  
Chrome CAS/01/CH - 58      Brushed Steel CAS/02/BS - 68



**Cascade Square Spout**  
Chrome CAS/01/CH - 58      Brushed Steel CAS/02/BS - 68



**Pluie Angled Spout**  
Chrome PLU/01/CH - 60      Brushed Steel PLU/02/BS - 70



**Curvato Slim Lever/Curved Spout**  
Chrome CUR/01/CH - 99      Brushed Steel CUR/02/BS - 110



**Rusello Square Body/Slim Lever**  
Chrome RUS/01/CH - 99      Brushed Steel RUS/02/BS - 110



**Versare Square Design**  
Chrome VER/01/CH - 130      Brushed Steel VER/02/BS - 140



**Novanta 4 Hole Design**  
Chrome NOV/01/CH - 275      Brushed Steel NOV/02/BS - 295



**Treforo 3 Hole/Curved Spout**  
Chrome TRE/01/CH - 165      Brushed Steel TRE/02/BS - 185



**Spruzzo Cold Rinse/Hand Spray**  
Chrome SPR/01/CH - 55      Brushed Steel SPR/02/BS - 60



**Grande Pull Out Spray**  
Chrome GRA/01/CH - 155      Brushed Steel GRA/02/BS - 185



**Fontaine Single Lever**  
Chrome FON/01/CH - 28      Brushed Steel FON/02/BS - 35



**Quad Colander**  
AC-QUA-CS - 38



**Quad 1020 IS Colander**  
AC-QUA-CS-102 - 38



**Quad Steel Basket**  
AC-QUA-SWB - 22



**Quad 1020 Steel Basket**  
AC-QUA-SWB-102.82 - 20

**Zen Chopping Board**  
AC-ZEN-GCB - 23



**Zen Colander**  
AC-ZEN-CS - 38



**Zenuno 400 Tray**  
ZU-40-4-S-TRAY-072 - 49

